

Learning to Be a World Citizen

INTERNATIONAL SCHOOL
OF DÜSSELDORF E.V.



Senior School Profile 2016-2017

Welcome to one of the
IB flagship schools in Europe



INTERNATIONAL SCHOOL OF DÜSSELDORF E.V.
Niederrheinstraße 336 | 40489 | Düsseldorf | Germany
Tel: +49 (0)211 9406 777 | Fax: +49 (0)211 9406 804
info@isdedu.de | www.isdedu.de

Director

Simon Head | director@isdedu.de

Senior School Principal

Michael Coffey | coffeym@isdedu.de

IB Diploma Programme Coordinator

Michael Moore | moorem@isdedu.de

COUNSELLING DEPARTMENT OFFICE

Tel: +49 (0)211 9406 722 | Fax: +49 (0)211 9406 860

www.isdcounselling.org

CEEB CODE: 734315

Grade 11/12 Counsellors

Keith Layman (A-K) | layman@isdedu.de

Ginny Reiss (L-Z) | reiss@isdedu.de

German University Counsellor

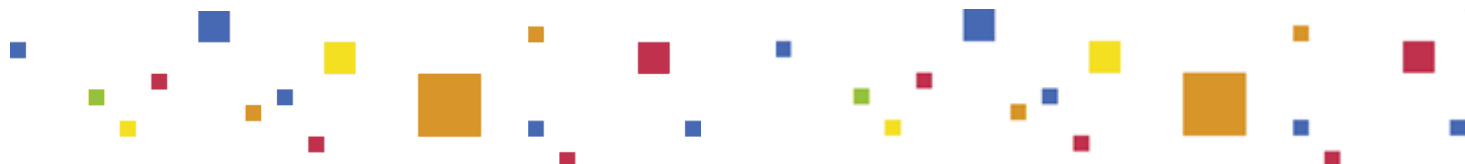
Christiane Güldner | gueldner@isdedu.de

Japanese University Counsellor

Takashi Yoshida | yoshida@isdedu.de

ACCREDITATION

State of North Rhine-Westphalia,
Department of Education



MISSION

- **We inspire** our students to be confident, creative and critical thinkers.
- **We work together** to challenge and support our students to be successful and responsible in an evolving world.
- **We are** an international community of learners.

THE SCHOOL

ISD is an independent, non-profit, university-preparatory school, founded in 1968 to serve the educational needs of the international community in and around Düsseldorf. The school has approximately 1.030 students enrolled from Reception to Grade 12. Almost 700 students are enrolled in the Senior School (6-12) and represent close to 60 nationalities, with German (21%), U.S. (14%), Japanese (9%), Dutch (7%) and UK (6%) comprising the five largest groups. The language of instruction is English.

FACULTY

The Senior School faculty consists of 98 teachers representing 17 nationalities. 46 hold master's degrees or the equivalent, and 5 hold PhDs. The student-faculty ratio is 7 to 1 with an average class size of 15.

CURRICULUM

ISD is an International Baccalaureate World School offering all three IB programmes: Primary Years (Reception-Gr. 5), Middle Years (Gr. 6-Gr. 10) and Diploma (Gr. 11-Gr. 12). Students in grades 9-12 follow a university-preparatory programme leading to the IB Diploma or DP Courses (Certificates), in addition to earning the ISD High School Diploma.

ENGLISH AS AN ADDITIONAL LANGUAGE (EAL)

EAL students usually spend three semesters in the EAL programme, with three to four EAL classes per day. While in the programme, students attend mainstream mathematics and science classes at grade level. Depending on proficiency, these students follow a full schedule of mainstream classes after one to four semesters. After completing the EAL programme, students must attend mainstream classes for one full year in order to graduate. Although formal EAL classes are not offered in grades 11 and 12, the EAL Department does provide targeted individual support for DP students. In addition, the DP English B HL/SL course is taught by EAL specialists.

EXTRACURRICULAR ACTIVITIES

ISD offers an array of sporting, cultural, service and personal enrichment activities including, but not limited to:

Fine and performing arts	Global Issues Network
Athletics and team sports	Model United Nations
Student Athlete Advisory Board	Student Council
Environmental projects	Speech & Debate
Judicial Board	Sound & Lights
Ambassador Team	Yearbook Team
Habitat for Humanity	Project Tanzania
World Volunteer Laos	Friends of Nepal
Peace Village	Math competitions
Band, choir & music ensembles	Green Team
International Honour Society	ISDifferences
Mentoring Programme	Gaming Club
Mother Tongue Language Lessons	Student Academic Advisory Committee
Duke of Edinburgh's Award	

EVALUATION SCHEME

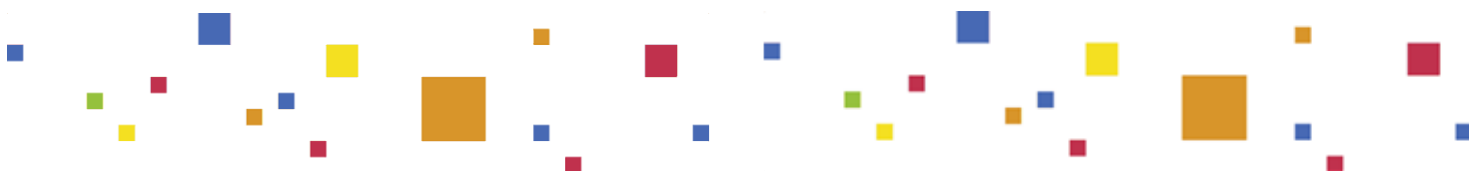
ISD conforms to the IB Diploma Programme system with grades ranging from 7 (high) to 1 (low). We use this system for internal assessment, external assessment, and on official transcripts. In grades 9 and 10 we report on achievement once per year (June). In grades 11 and 12 we report on achievement twice per year (January and June). The January grade indicates progress until December, while the June grade indicates achievement for the year.

ISD HIGH SCHOOL DIPLOMA REQUIREMENTS

To be awarded the ISD High School Diploma a student must:

- Complete four years of education in grades 9-12 or their equivalents.
- Take at least one year of mainstream English.
- Take three consecutive years of the same foreign language unless the Principal makes an exception.
- Study German to a minimum competency level equivalent to ISD's "Advanced German" (normally three years).
- Successfully complete grades 9 and 10. At ISD this means following years 4 and 5 of the IB MYP curriculum, including at least two electives. A student may not have more than two final academic achievement grades below '3' in either year.
- Earn a combined minimum of 40 points in grades 11 and 12. A student may not have more than four final academic achievement grades below '3', of which no more than two may be earned in 12th grade.
- Successfully complete the Service as Action (grade 9-10) and/or Creativity / Activity / Service (grade 11-12) requirements.
- **Most ISD courses last one full year and are equivalent to a 1.0 credit course.**

GRADE	The student demonstrates:
7	<ul style="list-style-type: none"> ▪ A consistent and thorough understanding of the required knowledge and skills. ▪ Ability to apply required knowledge and skills routinely in a wide variety of situations. ▪ Consistent evidence of analysis, synthesis and evaluation where appropriate. ▪ Frequent originality and/or insight as appropriate. ▪ Work of high quality on a regular basis.
6	<ul style="list-style-type: none"> ▪ A consistent and thorough understanding of the required knowledge and skills. ▪ Ability to apply required knowledge and skills in a wide variety of situations. ▪ Consistent evidence of analysis, synthesis and evaluation where appropriate. ▪ Frequent originality and/or insight as appropriate.
5	<ul style="list-style-type: none"> ▪ A consistently good understanding of the required knowledge and skills. ▪ Ability to apply required knowledge and skills in a variety of situations. ▪ Regular evidence of analysis, synthesis and evaluation where appropriate. ▪ Occasional originality and/or insight as appropriate.
4	<ul style="list-style-type: none"> ▪ Satisfactory general understanding of the required knowledge and skills. ▪ Ability to apply required knowledge and skills effectively in typical situations. ▪ Occasional evidence of the skills of analysis, synthesis and evaluation where appropriate.
3	<ul style="list-style-type: none"> ▪ Limited achievement against most of the objectives, or clear difficulties in some areas. ▪ Limited understanding of the required knowledge and skills. ▪ Ability to apply required knowledge and skills fully in typical classroom situations only with support.
2	<ul style="list-style-type: none"> ▪ Very limited achievement against all objectives. ▪ Difficulty in understanding the required knowledge and skills. ▪ Inability to apply required knowledge and skills fully in typical classroom situations, even with support.
1	<ul style="list-style-type: none"> ▪ Minimal achievement in terms of the objectives.



CLASS RANK AND GRADE POINT AVERAGE

- We calculate GPA on a 7.0 basis using ISD coursework only.
- Although we do not weight DP HL or SL courses, we consider all DP courses to be honours-level, particularly at HL.
- Due to the mobility of our students and the diversity of their educational backgrounds, it is difficult to provide an accurate or fair class rank.

Suggested U.S. GPA Equivalency Scale

ISD Grade / GPA	IBDP Descriptor	U.S. Grade / GPA
7 / 7.0	Exceptional	A+ / 4.5
6 / 6.0	Superior	A/A- / 4.0
5 / 5.0	Very Good	B+ / 3.5
4 / 4.0	Satisfactory	B / 3.0
3 / 3.0	Mediocre	C / 2.0
2 / 2.0	Poor	D / 1.0
1 / 0.0	Very Poor	F / 0.0

SAT SUMMARY – Class of 2012 to Class of 2016

Section	Middle 50%	Mean	Students
Critical Reading	500 - 640	573	
Math	540 - 680	609	
Writing	520 - 640	581	
Total	1580 - 1970	1763	113

SAT SUMMARY – Class of 2017 to Class of 2018

Section	Middle 50%	Mean	Students
Reading & Writing	580 - 690	620	
Mathematics	610 - 720	660	
Total	1180 - 1390	1250	15

SAT SUBJECT TEST SUMMARY – Class of 2012 to Class of 2016

Section	Middle 50%	Mean	Students
Biology - Molecular	460 - 670	596	5
Chemistry	650 - 770	705	11
English Literature	580 - 700	638	6
German	720 - 800	751	10
Math Level I	620 - 710	692	5
Math Level II	720 - 800	754	20
Physics	750 - 760	754	7

ACT SUMMARY – Class of 2011 to Class of 2016

Section	Middle 50%	Mean	Students
English	23 - 31	27.2	
Math	23 - 30	27.0	
Reading	21 - 32	26.7	
Science	24 - 31	27.2	
Composite	22 - 30	26.9	39

THE IB DIPLOMA PROGRAMME (DP) AT ISD

The DP is an academically challenging and balanced two-year programme of education that seeks to develop students who have excellent breadth and depth of knowledge. The curriculum addresses the intellectual, social, emotional and physical well-being of students, preparing them for success in university and life beyond.

The DP organizes teaching and learning through six subject groups: Studies in Language & Literature; Language Acquisition; Individuals & Societies; Sciences; Mathematics; The Arts. These are underpinned by the DP Core (Theory of Knowledge, Extended Essay, and Creativity, Activity, Service). For most courses, students take written examinations at the end of the DP. In many programme areas, students complete externally assessed coursework. To be awarded the IB Diploma a student must earn a minimum of 24 points in their three HL and three SL subjects. Students who do not pursue the full DP sit external examinations, earning individual Certificates for completed DP courses.

IB DIPLOMA PROGRAMME MEAN SCORES | CLASS OF 2016

ISD is a non-selective IB Diploma Programme school. More than 90% of ISD students in grades 11 and 12 choose to enrol in the DP.

84% of candidates earned an IB Diploma | 37% earned Bilingual Diplomas
 40-45 pts | 13% 36-39 pts | 15% 32-35 pts | 27%
 28-31 pts | 22% 24-27 pts | 11%

Mean **total score** for IB Diploma Programme candidates (out of 45)
 2016 | 34.0 2015 | 34.0 2014 | 33.2 2013 | 32.5 2012 | 33.0

Mean **subject score** for IB Diploma Programme candidates (out of 7)
 2016 | 5.38 2015 | 5.37 2014 | 5.27 2013 | 5.17 2012 | 5.31

IB DIPLOMA PROGRAMME RESULTS | CLASS OF 2016

HL: Higher Level | SL: Standard Level | **Scale: 7 (high) to 1 (low)**

*Self-taught | **Sports, Exercise & Health Science

Subject	Grade Distribution							ISD Avg.	World Avg.
	7	6	5	4	3	2	1		
Studies in Language and Literature									
English Lit HL	1	1	4					5.50	4.80
English Lit SL	3	3	1					5.29	4.98
German Lit HL	1	2						5.33	5.20
German Lit SL	1							6.00	5.25
Japanese Lit HL	4	3	3					6.10	6.08
Japanese Lit SL	1	3						5.25	5.89
*Portuguese Lit SL				1				4.00	4.70
*Spanish Lit SL			1					5.00	4.05
*Swedish Lit SL		1						6.00	4.94
Eng Lang/Lit HL	2	14	8	3				5.56	5.05
Eng Lang/Lit SL	5	18	16	4				5.56	5.17
Ger Lang/Lit HL	2	4	6	1				5.67	5.66
Ger Lang/Lit SL	3	1	6	1				5.55	5.39
Language Acquisition									
English B HL	1	4	2		1			5.50	5.70
English B SL	2	1		2				5.60	5.86
French B HL	2	2						6.50	5.27
French B SL		4						6.50	4.92
German B HL	4	4	1					6.33	5.85
German B SL	2	6	5	1				5.64	5.05
Spanish B HL	2	1	2					6.00	5.40
Spanish B SL	4	2						6.67	5.07
French Ab Init SL				1				4.00	4.90
German Ab Init SL	1	6	4	1				5.58	4.88
Japan Ab Init SL			3	1	1			4.40	5.00
Spanish Ab Init SL	1	1	1					5.00	5.10
Individuals and Societies									
Economics HL	7	18	7	4	4	1		5.41	5.12
Economics SL	2	1	4	5	1			4.85	4.64
History (EU) HL	2	4	9	4				5.21	4.84
History SL		3	4		1			5.13	4.67
ITGS HL			2	3	3			3.88	4.48
ITGS SL				1				4.00	4.33
Psychology HL		9	5	6				5.15	4.67
Psychology SL	1	4	3		1	1		5.10	4.32
Sciences									
Biology HL	7	6	11	9	9			4.83	4.32
Biology SL	1	4	2	6	2	1		4.56	4.24
Chemistry HL	5	2	6	10				5.09	4.47
Chemistry SL	2	4	6	2	2	1		4.94	3.93
Physics HL	1	3	5	5	3	1		4.28	4.60
Physics SL		1	2	1	2			4.33	4.04
**SEHS SL	4	5	1	3	1			4.57	3.99
Mathematics									
Math Studies SL		2	7	9	3	1		4.27	4.41
Mathematics HL	1	2	3	3				5.11	4.46
Mathematics SL	6	16	14	8	15	5		4.61	4.38
The Arts									
Visual Arts A HL		6	3	2				5.36	4.78
Visual Arts A SL	1	1	1	3				5.00	4.35



95% of ISD students pursue higher education within one year of graduation. The remaining students typically pursue volunteer and/or internship opportunities or fulfil military/civil service obligations. The following is a list of universities and colleges where ISD students have been accepted over the past four years. Universities in bold indicate Class of 2016 matriculation.

CANADA 

Brock University
 McGill University
Université de Montréal
 University of British Columbia
 University of Toronto

DENMARK 

University of Copenhagen

GERMANY 

Bucerius Law School
BSP Business School Berlin
Cologne Business School (2)
 Frankfurt School of Finance & Management
 Heinrich-Heine-Universität
 Düsseldorf
 Hochschule Düsseldorf
 Hochschule Rhein-Waal
 International School of Management
IUBH School of Business & Management (2)
 Jacobs University Bremen
 Karlsruhe Institute of Technology
 RWTH Aachen
 Technische Universität München
Universität Heidelberg
 Universität Hamburg
 Universität zu Köln
WHU – Otto Beisheim School of Management

HONG KONG 

The Hong Kong University of Science & Technology

HUNGARY 

Semmelweis University
 Szent István University
University of Szeged (3)

ITALY 

Università Bocconi

JAPAN 

(Class of 2015 Matriculation)

Chuo University
Doshisha University
Gakushuin University
Hitotsubashi University
Hokkaido University
International Christian University
Keio University (4)
 Kwansai Gakuin University
 Meiji University
 Rikkyo University
Sophia University (2)
Waseda University
 Yokohama City University
Yokohama National University

KOREA 

Sungkyunkwan University

THE NETHERLANDS 

Amsterdam Fashion Academy
Amsterdam University College (3)
Delft University of Technology
 Eindhoven University of Technology
Erasmus University Rotterdam (16)
 Fontys University of Applied Sciences
 Leiden University
 Leiden University College The Hague
 Maastricht University
Royal Academy of Art
 Stenden University of Applied Sciences
 Tilburg University
 University College Maastricht
 University College Roosevelt
 University College Utrecht
 University of Amsterdam
 University of Groningen
 University of Twente
Zuyd University of Applied Sciences (2)

SPAIN 

Universidad Ramon Llull - ESADE
 IE University

SWEDEN 

Uppsala University

SWITZERLAND 

École Hôtelière de Lausanne
 Universität St. Gallen

UNITED ARAB EMIRATES 

New York University Abu Dhabi

UNITED KINGDOM 

Arts University Bournemouth
Bangor University
Bath Spa University
Bucks New University
 Cardiff University
 City University
 Durham University
 Glasgow School of Art
 Goldsmiths, University of London
 Imperial College London
 Kensington & Chelsea College
King's College London (3)
 Kingston University
 Lancaster University
 London School of Economics & Political Science
Loughborough University (3)

Newcastle University
 Nottingham Trent University
Oxford Aviation Academy
 Plymouth College of Art
Plymouth University
 Queen Mary, University of London
 Royal Holloway, University of London
 Royal Veterinary College
 School of Oriental & African Studies
 The Robert Gordon University
University College London
 University of Aberdeen
 University of the Arts London
 - Camberwell College of Arts
 - Central Saint Martins
 - London College of Fashion
University of Bath
 University of Birmingham
 University of Brighton
 University of Bristol
University of Cambridge
 University of Dundee
University of East Anglia
 University of Edinburgh
 University of Essex
 University of Exeter
 University of Glasgow
University of Greenwich (2)
University of Kent
 University of Leeds
 University of Leicester
University of Liverpool
 University of Manchester
 University of Nottingham
 University of Oxford
University of Reading
 University of St. Andrews
 University of Sheffield
 University of Strathclyde
 University of Southampton
 University of Stirling
 University of Surrey
 University of Sussex
 University of Warwick
 University of York

UNITED STATES 

American University
 Babson College
 Baylor University
 Boston College
 Boston University
 Brandeis University
 Bucknell University
 Chapman University
 College of the Holy Cross
 Columbia University

Dartmouth College
Duke University (2)
Emerson College
 Eugene Lang College
 Florida Institute of Technology
 Florida State University
 Franklin & Marshall College
 Georgetown University
 Grinnell College
 Harvard University
 Kalamazoo College
 Louisiana State University
 Loyola Marymount University
 Lynn University
 Manhattan College
 Marist College
 Michigan State University
 Middlebury College
 New York University
 Northeastern University
 Pennsylvania State, University Park
 Pepperdine University
 Pomona College
 Princeton University
Savannah College of Art & Design
 Syracuse University
 Texas A&M University
 The George Washington University
The University of Texas at Austin (2)
 Trinity College (CT)
 Tufts University
 University of California, Berkeley
 University of California, Davis
 University of California, Los Angeles
 University of California, San Diego
 University of Chicago
 University of Illinois at Urbana-Champaign
 University of Massachusetts, Amherst
University of Miami
 University of Michigan, Ann Arbor
 University of North Carolina at Chapel Hill
 University of Pennsylvania
 University of Southern California
Vanderbilt University
 Villanova University

